

# VideoSense Edge



## Features

- Including VideoSense Edge software
- Analytic functions included:
  - Video Analyzer
  - Interactive DS
  - Sensor Hub
- Bundle WISE-PaaS SignageCMS
- Support StoreVue Cloud Service



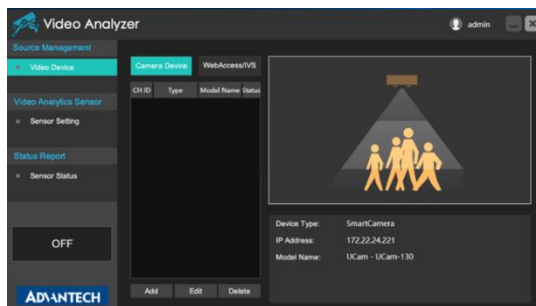
## Introduction

VideoSense Edge is an intelligent sever system designed for data management and signage interaction. It bundles VideoSense Edge software with multiple functions for various settings. VideoSense Edge bundled WISE-PaaS SignageCMS for data real-time interaction with the group of counting numbers & occupancy numbers. Furthermore, VideoSense Edge software is a fully supported StoreVue service that provided more comprehensive intelligent retail solutions. And VideoSense Edge is an industrial design that provides the best reliability for 24/7 operations for various environments.

## Key Functions

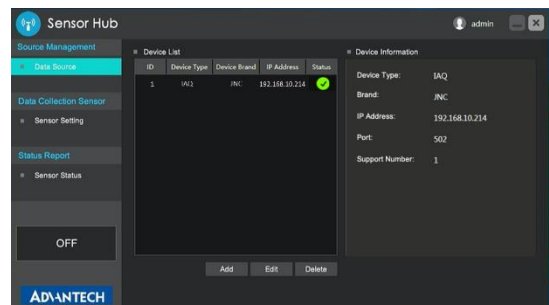
### Video Analyzer

Video source setting including UCAM and Video AI counting edge to calculate the occupancy.



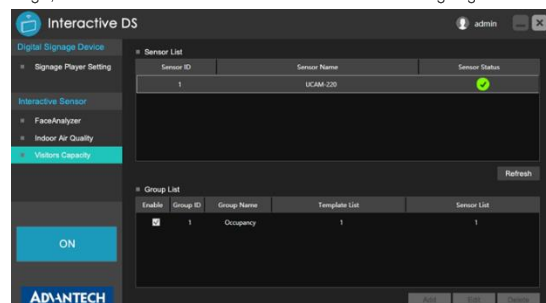
### Sensor Hub

Sensor source setting for the WISE-PaaS SignageCMS interaction.



### Interactive DS

Grouping the sensors including the UCAM, Video AI counting edge, IAQ sensor to interact with the WISE-PaaS SignageCMS.



### StoreVue & WISE-PaaS Signage CMS ready

Compatible-ready with StoreVue Service for counting statistics & data visualization. Support WISE-PaaS SignageCMS for data real-time interaction.

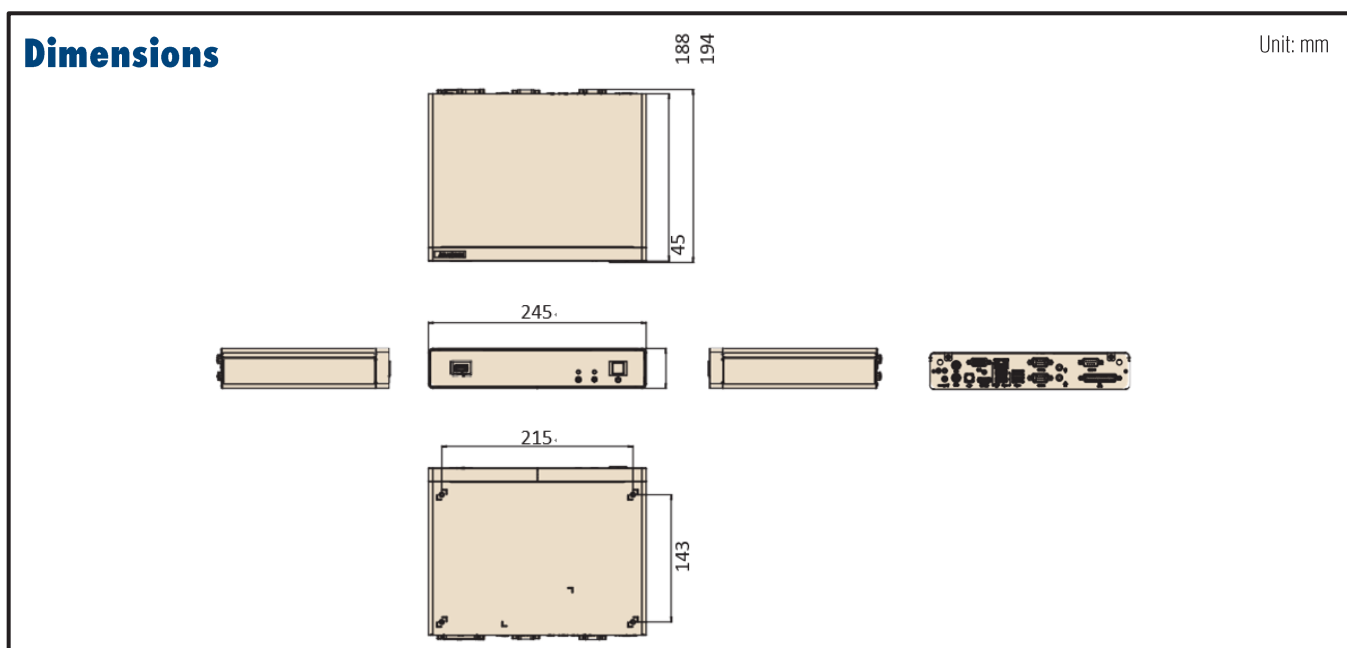


**WISE-PaaS/SignageCMS**

## VideoSense Edge Specification

Part Number	UBX-310UST-G1E-C	
Software	Bundled Software	VideoSense Edge Software/WISE-PaaS SignageCMS
	Software Feature	Video Analyzer, Sensor Hub,, Interactive DS
	Maximum Channels	32 camera/sensor sources
Hardware	CPU	Intel® Celeron® J1900, 2.4 GHz
	RAM	8 GB DDR3, 1333 MHz
	Graphics	Intel® HD Graphics, HDMI/VGA
	Storage	1 x SATA 2.5" HDD (500 GB)
	Internet	1 x RJ45 (10/100/1000 Mbps)
	I/O	5 x USB, 3 x COM, 1 x LPT
	Power	60W (12V power adapter)
	Size	245 x 45 x 185 mm
	Weight	2 kg
Operating System	Microsoft® Windows 10 IoT Enterprise 2016 LTSB	
Environment	Operating/Storage Temperature	0 ~ 40 °C / -40 ~ 85 °C (-40 ~ 185 °F)
	Humidity	90% @ 40° C (non-condensing)
	Vibration	With HDD: 0.5 Grms, IEC 60068-2-64, random, 5~500Hz, 3 axes, 1hr/axis
	Shock	With HDD: 10 G, IEC 60068-2-27, half sine, 11 ms duration

## Dimension Specification



## Integrated I/O



## Ordering Information

P/N	Description
UBX-310UST-G1E-C	UBX-310,J1900,8GRAM,500G HDD,Win10, VideoSense Edge Software & WISE-PaaS SignageCMS